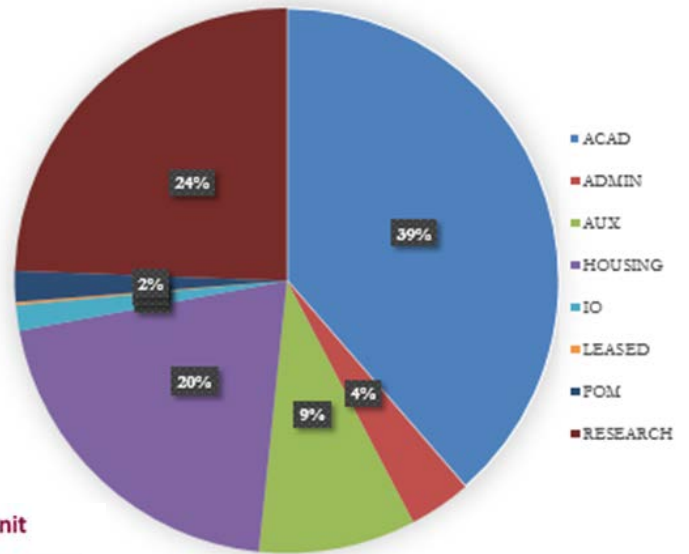




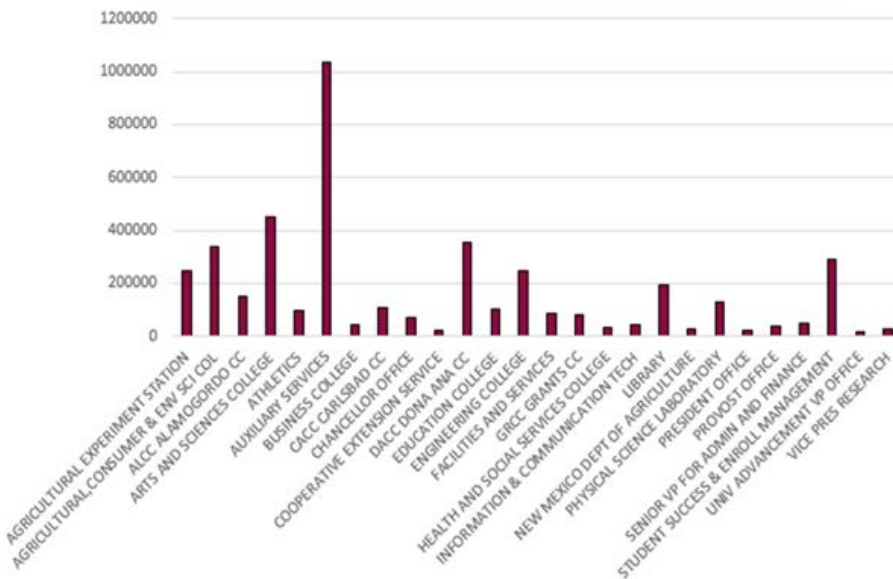
Facilities Space Planning

Campus Name	Total Building Square Footage	Total Number of Buildings
Las Cruces Main Campus	5,550,504	278
Alamogordo Campus	222,712	13
Carlsbad Campus	163,255	4
Dona Ana Campus	543,903	24
Grants Campus	139,224	10
Remote Campuses	290,485	136

NMSU Las Cruces Campus Building Use



Total Net Assignable Square Footage by Major Administrative Unit



Facilities and space are the university's largest and most valuable physical asset!